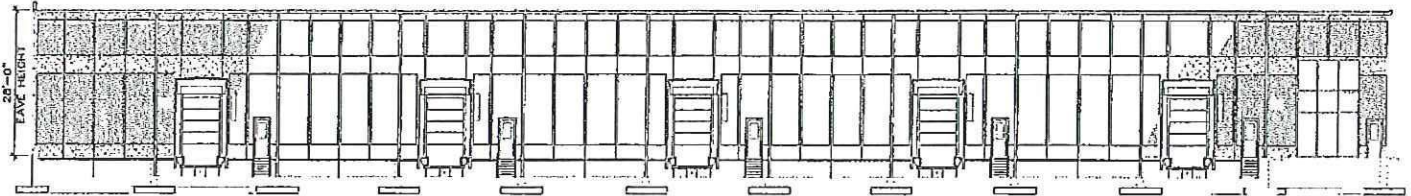




FOREIGN TRADE ZONE



CARGO FACILITY/FOREIGN TRADE ZONE WAREHOUSE BUILDING AND LOADING DOCK



NORTH ELEVATION

AVAILABLE OCTOBER 2000

LOCATION

Address: Evansville-Vanderburgh Airport Authority District –
Foreign Trade Zone

City: Evansville
County: Vanderburgh

State: Indiana
Township: Center
Zip: 47711

WAREHOUSE DESCRIPTION

Warehouse Space Available:	39,690 sft	Ceiling Height:	24' min.
Office/Mechanical Room Space Available:	3,780 sft (over 2 stories)	Bay Spacing:	30' x 63'
Total Sq. Ft.:	41,580 sft – 1 st floor warehouse/office 1,890 sft – 2 nd floor office	Roof:	Standing Seam Metal
Floor:	6" concrete	Dock Doors, Depressed:	5 – 10' x 12'
Exterior:	Tilt-up Concrete Walls	Dock Doors, at Grade:	5 – 10' x 16'
Sprinkled:	Yes	Employee/Visitor Parking Spaces:	17

LOADING DOCK DESCRIPTION

Area:	180' x 318'	Surface:	Concrete
-------	-------------	----------	----------

UTILITIES

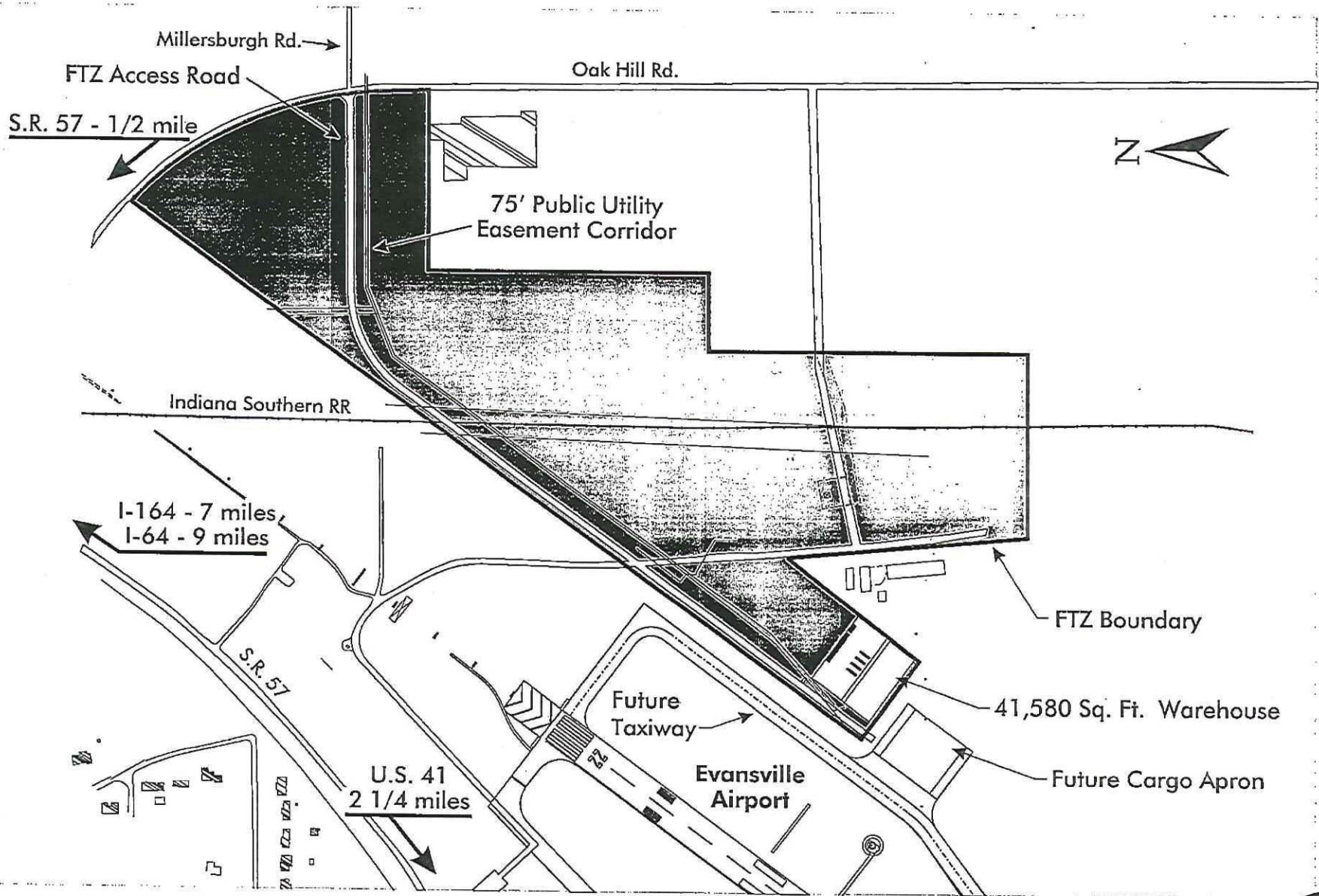
Electric:	7.2 kVA	Sewer:	8" Gravity
Gas:	2" minimum	Telephone:	Fiber Optics
Water:	12"		

CONTACT INFORMATION

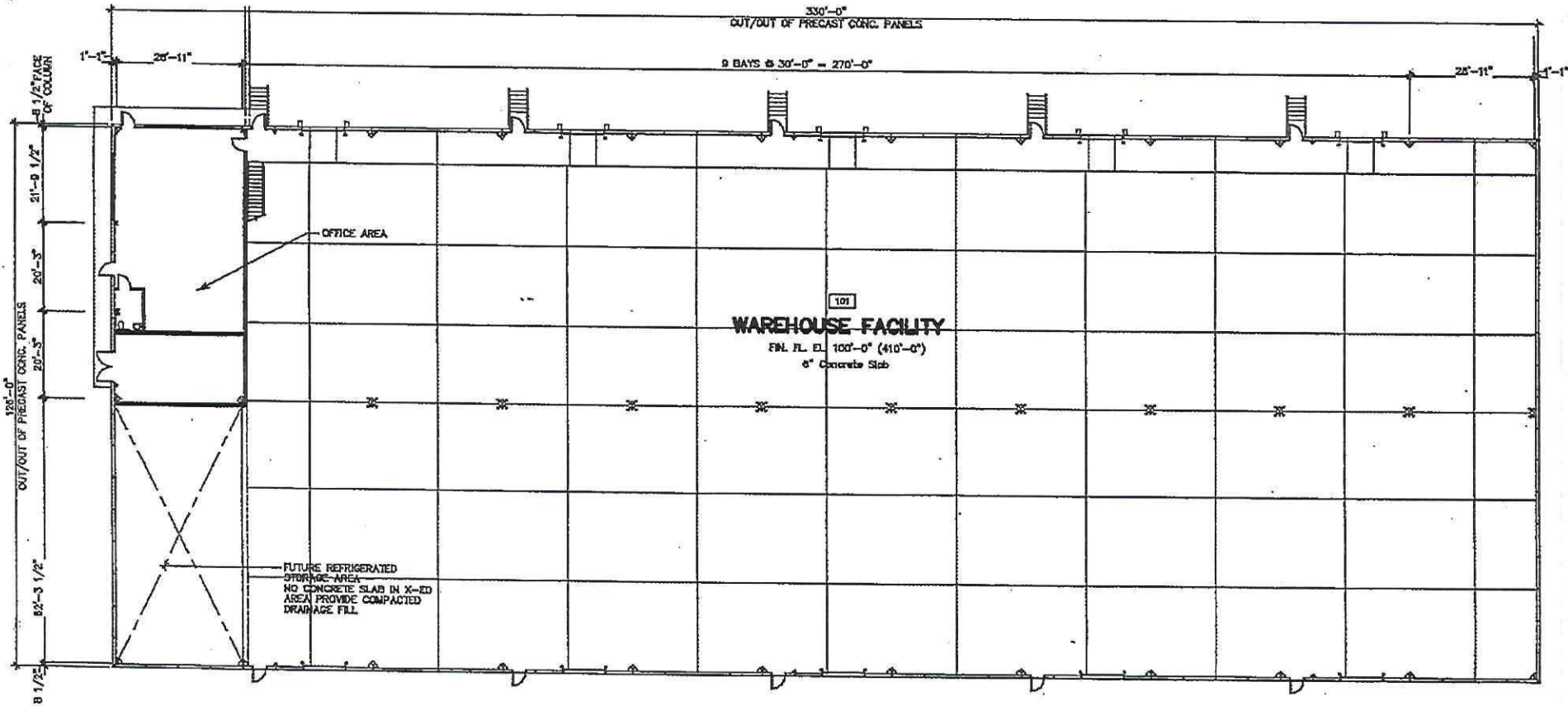
Owner:	Evansville-Vanderburgh Airport Authority District	Office Phone:	(812) 421-4401
Contact Persons:	Robert Working/Nelson Bailes	Office Fax:	(812) 421-4412

OTHER PERTINENT INFORMATION

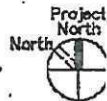
Ready to move-in warehouse building and loading dock, available October 2000. Located in the 65.83-acre Evansville-Vanderburgh Airport Authority District Foreign Trade Zone area, the warehouse can be leased as a distribution and/or manufacturing facility. The Owner will work with Lessee on necessary modifications to achieve distribution and/or manufacturing needs.

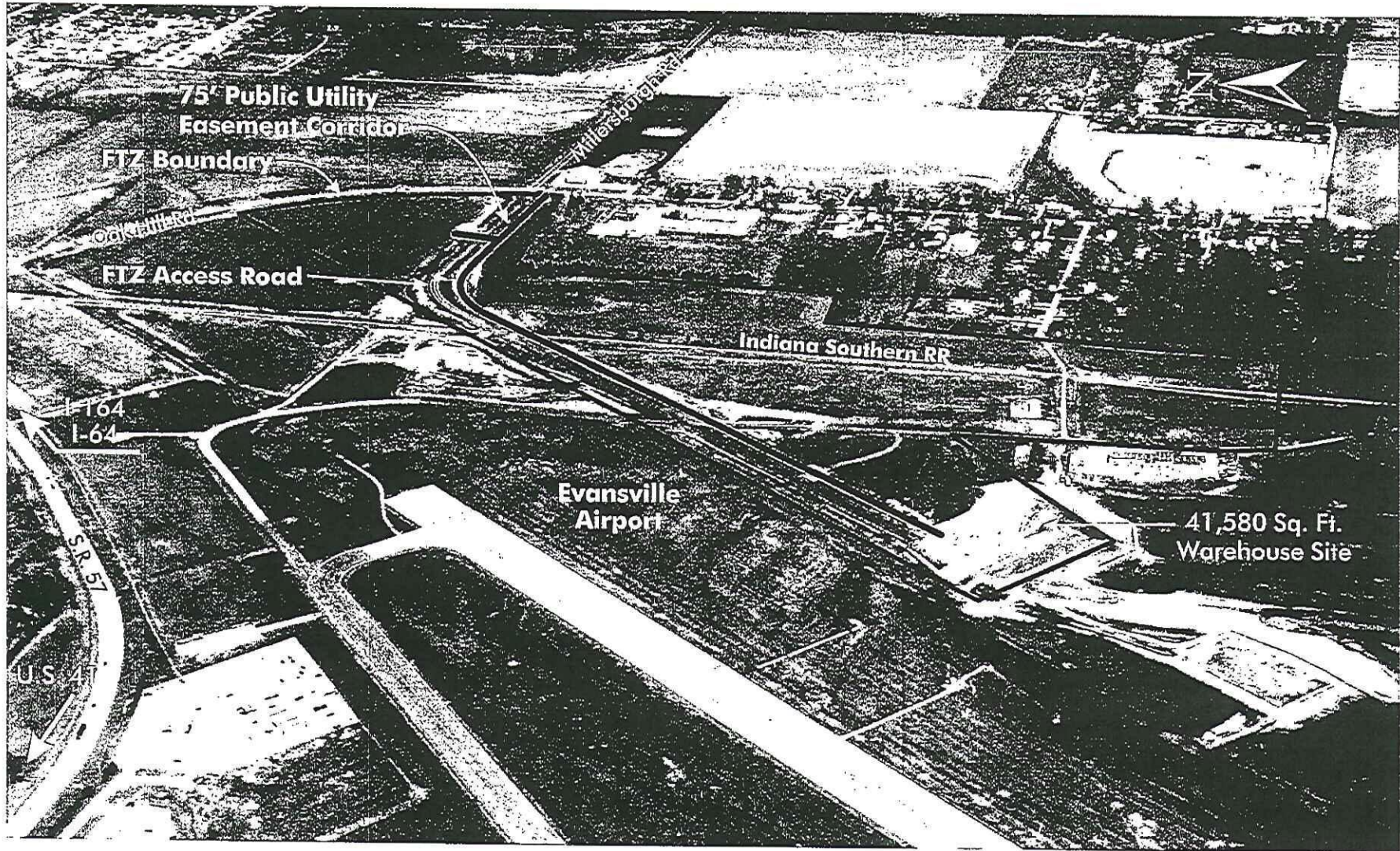


Evansville-Vanderburgh Airport Authority District **EVV**
Cargo Facility/Foreign Trade Zone/Airport Development Zone
 Evansville, Indiana



FLOOR PLAN





Evansville-Vanderburgh Airport Authority District
Cargo Facility/Foreign Trade Zone/Airport Development Zone
Evansville, Indiana

